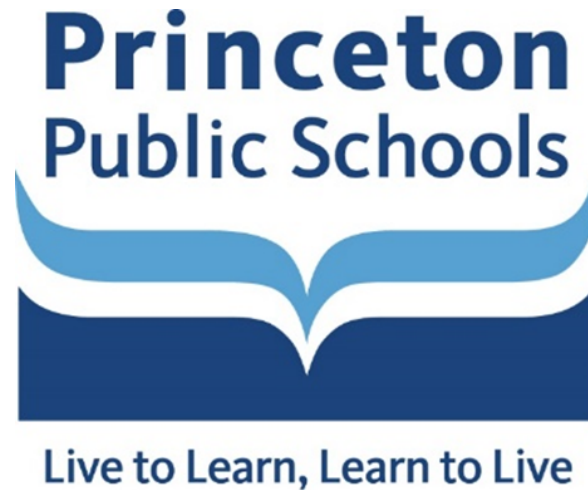


# Princeton School Facilities Plan

Existing Conditions Community Input

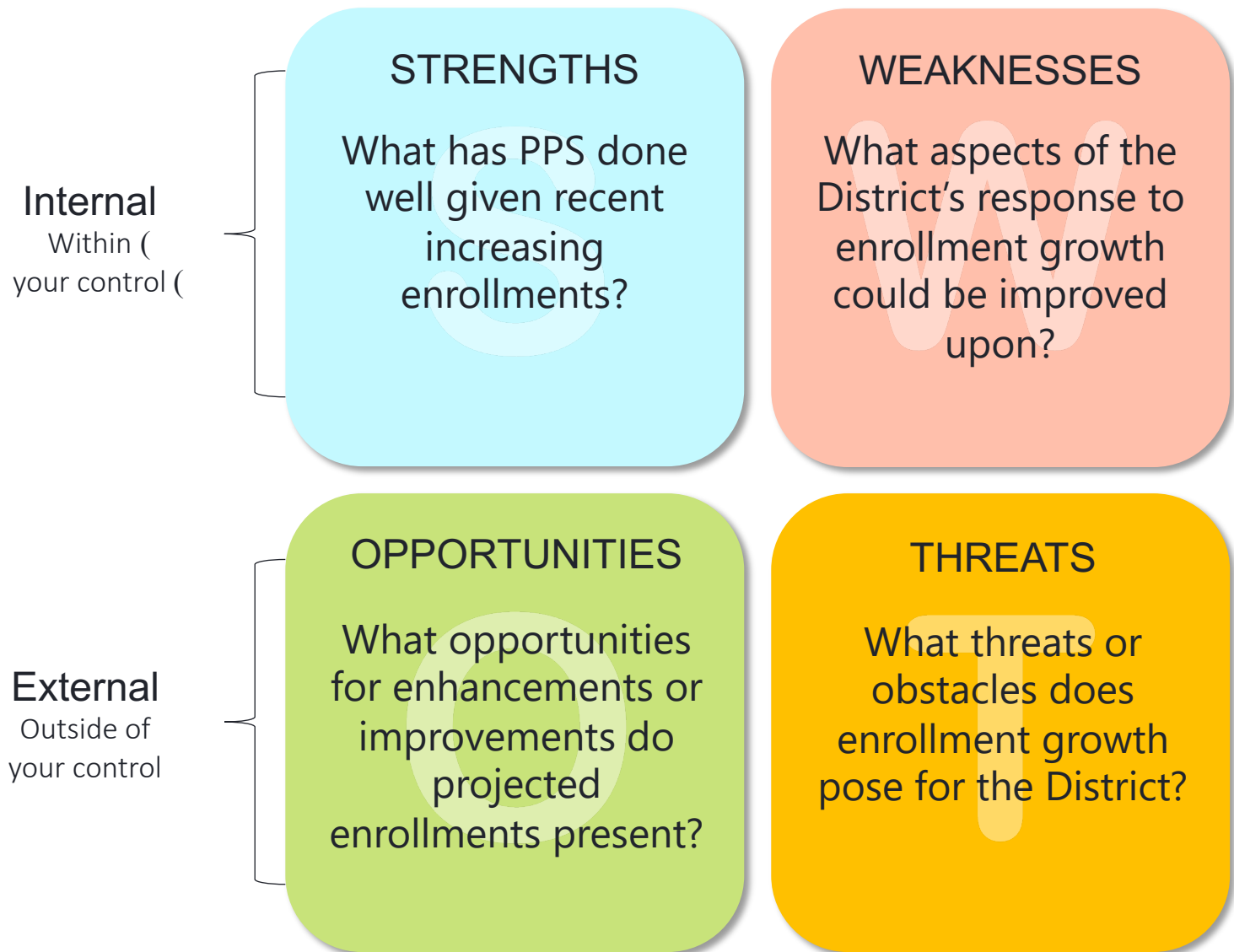
February 19, 2020



# INTRODUCTION

- January 25<sup>th</sup> community workshop on existing school district conditions invited participation in several exercises
- Same exercises were offered to entire community in an online survey format to hear from more stakeholders
- Objective of both the workshop and surveys was to complement existing conditions analyses on enrollment, facilities and education; get a better understanding of the community's priorities before considering any alternatives
  - Not a randomized survey sample
  - Qualitative information to accompany other analyses
- Following is a summary of combined workshop and online survey results
  - Complete results available on Schools' website
  - Number of responses to each question varies significantly
  - Online survey available from 1/25/20 – 2/10/20
  - Spanish version available – no responses

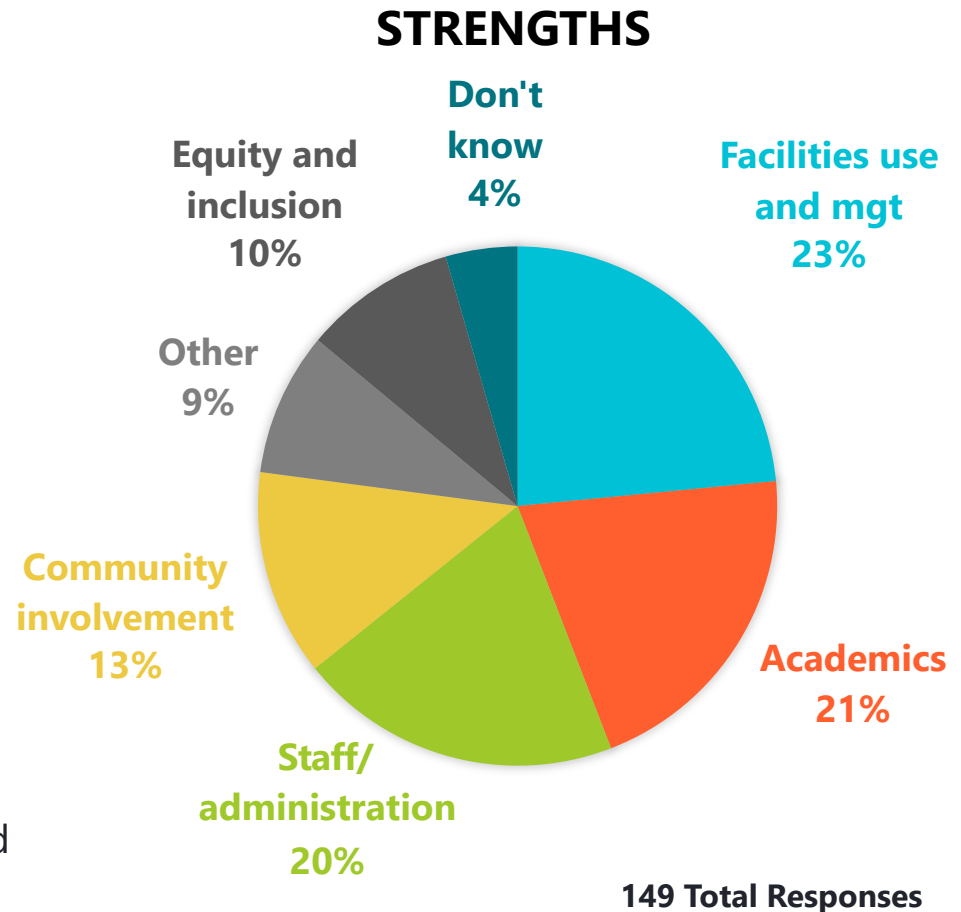
# SWOT ON ENROLLMENT CHANGES



# ENROLLMENT GROWTH - STRENGTHS

- Making efficient use of existing facilities, trying to proactively address facilities needs with current referendum work and unsuccessful larger referendum effort, and maintaining relatively low class sizes were the most frequent answers at 23%
- 21% of responses focused on the strength, breadth and quality of academic programming with several mentions of dual language program as positive
- The quality, creativity and commitment of teachers and staff was indicated in 20% of responses
- 13% of answers mention efforts to engage the community in planning for the future
- PPS's objectives and efforts around diversity, equity and inclusion were cited in 10% of responses

*What are PPS's strengths? What has PPS done well given recent increasing enrollment?*

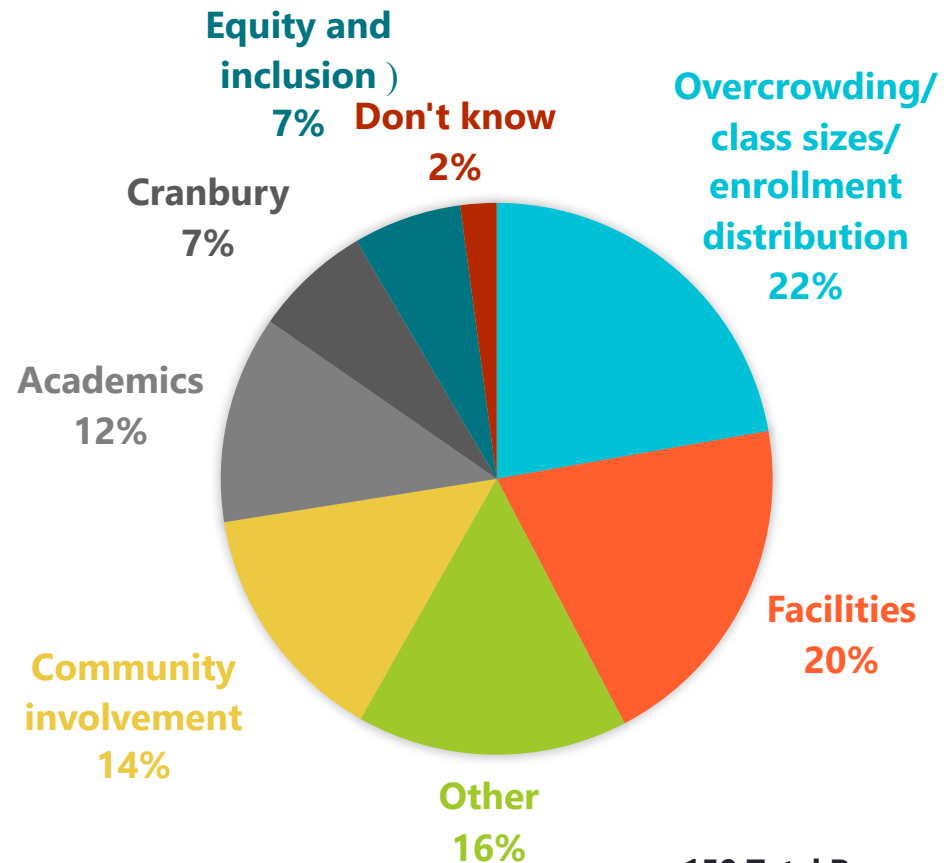


# ENROLLMENT GROWTH - WEAKNESSES

- Overcrowding of classrooms, hallways, and buildings; and uneven distribution of elementary enrollment among existing facilities were mentioned in 22% of responses
- 20% of answers focused on current facilities conditions, a need for more building space, and a need for more sports fields
- Communications and transparency from the School Board and administration, meaningful community engagement in planning, and community apathy were indicated in 14% of answers
- 12% indicated a concern for deteriorating academic quality
- Other issues were cited in 16% of responses

*What are PPS's weaknesses? What aspects of the District's response to enrollment growth could be improved upon?*

## WEAKNESSES

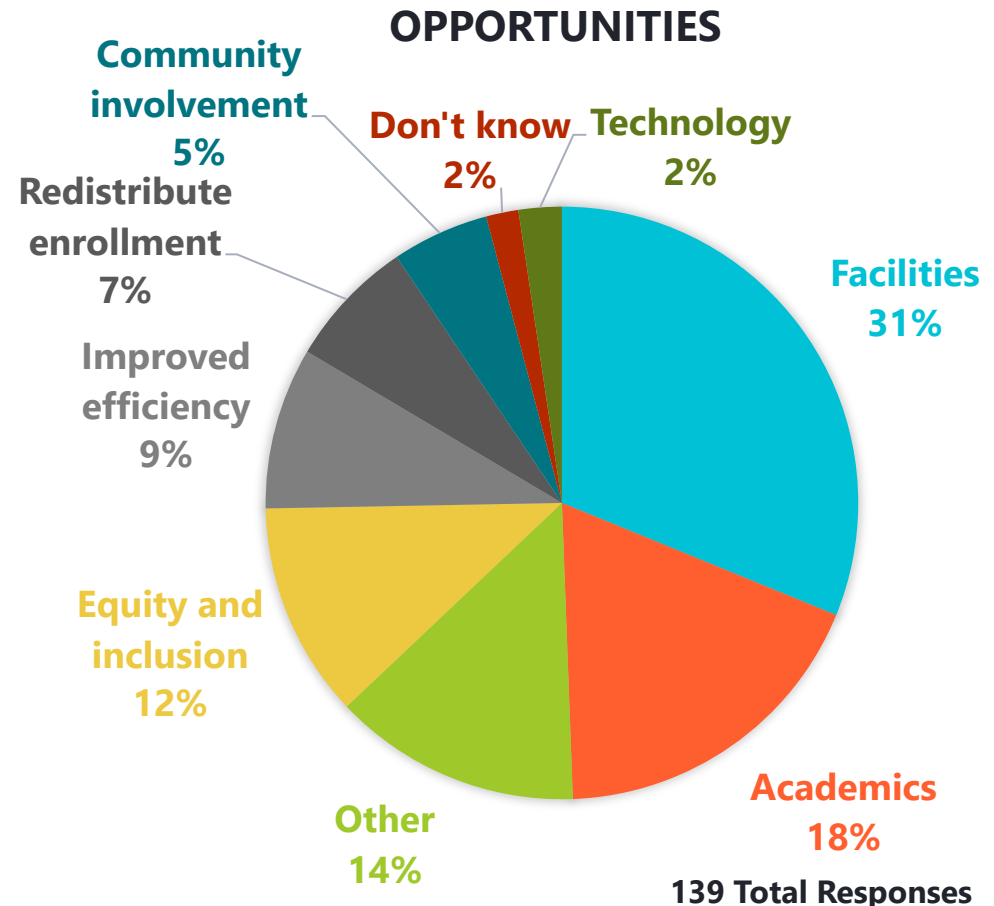


159 Total Responses

# ENROLLMENT GROWTH - OPPORTUNITIES

- Improved, flexible, expanded physical spaces were most frequently cited at 31% of all responses
- 18% of answers mention enhanced academic offerings
- Increased diversity within the District was indicated in 12% of responses
- Improved efficiency was mentioned in 9% of responses and included consolidated transportation routes, strategic investments/ additions, and classroom use
- 14% of answers cited other issues

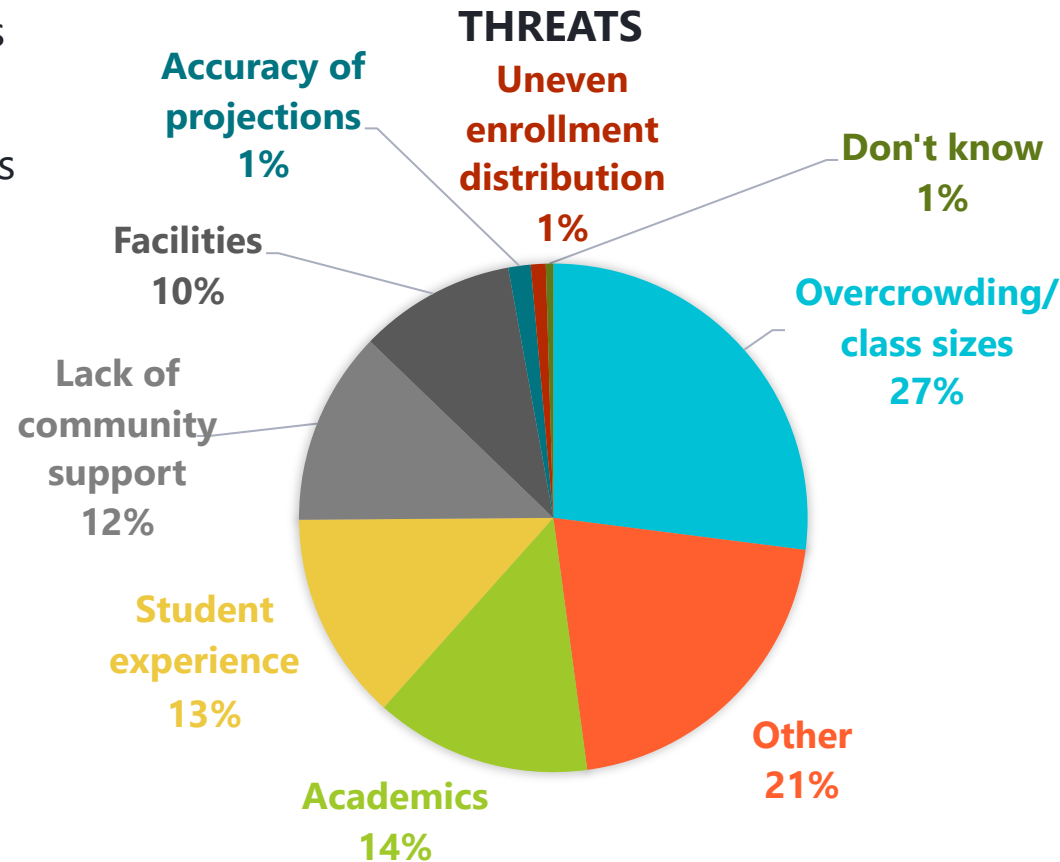
*What are PPS's opportunities? What opportunities for enhancements or improvements do projected enrollments present?*



# ENROLLMENT GROWTH - THREATS

- Increasing class sizes or overcrowding were mentioned in 27% of all answers
- 14% of responses mentioned academics suffering due to larger class sizes
- Another 13% cited students' experiences and well-being as under threat from large class sizes, overburdened faculty and staff
- 12% of responses focused on lack of support from within the community to fund or address changes
- Deteriorating or undersized facilities were cited in 10% of responses
- Other issues were raised in 21% of answers

*What threatens PPS? What threats or obstacles does enrollment growth pose for the District?*

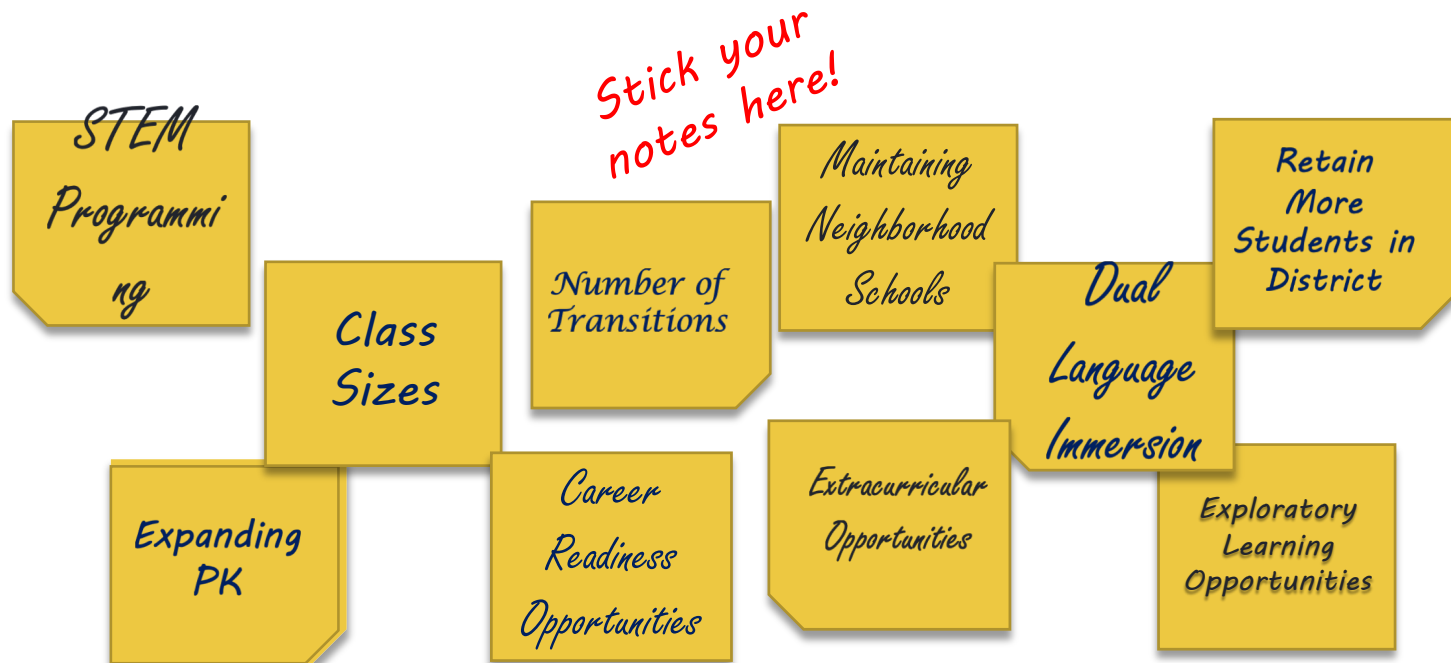


162 Total Responses

# EDUCATION EXERCISE

## Your Top 3!

What are your top 3 concerns for educational programming in Princeton Public Schools?

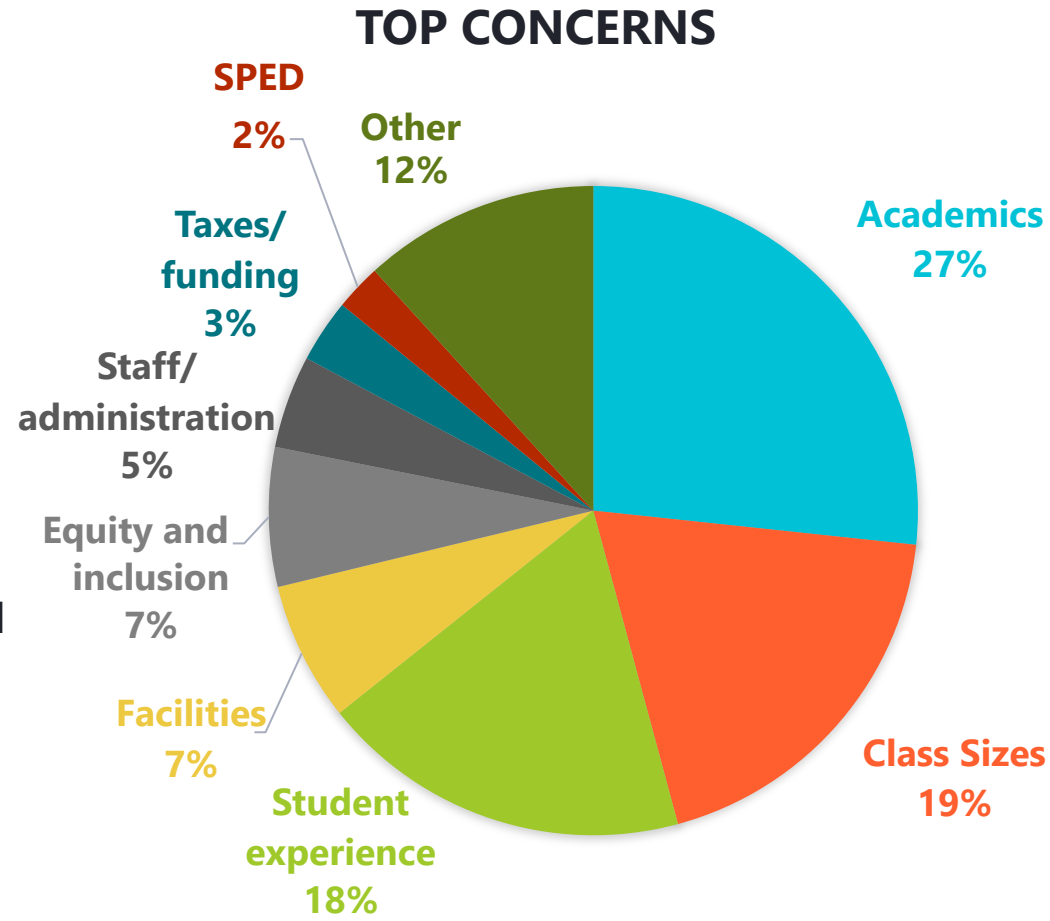




# TOP 3 EDUCATIONAL CONCERNS

*What are your top 3 concerns for educational programming in Princeton Public Schools?*

- Quality academic programs garnered the most responses at 27%
- 19% of answers mentioned maintaining low class sizes
- Maintaining students' well-being and positive experiences was cited as a priority in 18% of all responses
- Facilities were mentioned in 7% of all responses
- Equity and inclusion was also mentioned in 7% of answers
- 12% of responses cited other issues



476 Total Responses

# COMPLETE THIS THOUGHT

The 2020 Princeton Public Schools Master Plan will be a success if....

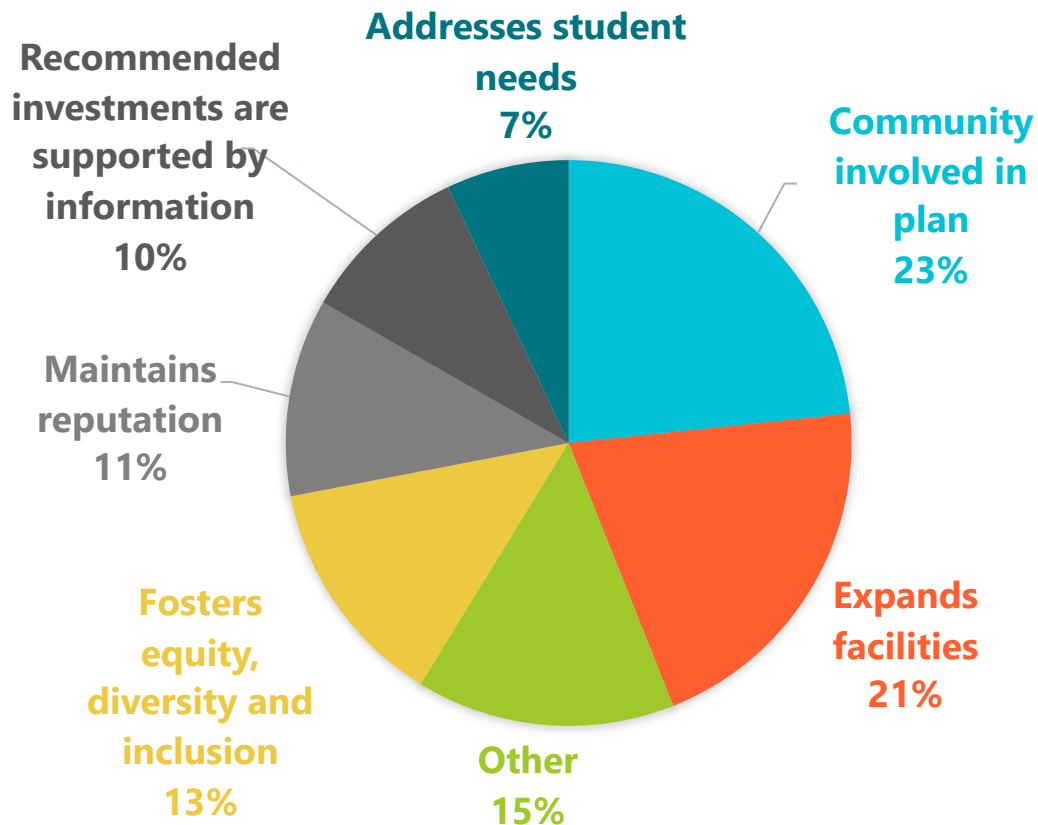


# MASTER PLAN SUCCESS

- Community involvement in the planning process was mentioned in 23% of responses
- 21% of answers focused on expansion of facilities
- Fostering equity, diversity and inclusion was cited in 13% of responses
- Maintaining the District's well-regarded reputation was included in 11% of responses
- 10% of responses mentioned that recommendations should be supported by information
- Other issues were raised in 15% of responses

*The 2020 Princeton Public Schools Master Plan will be a success if...*

## THE MASTER PLAN WILL BE A SUCCESS IF...



227 Total Responses

# TAKE-AWAYS

- Maintaining the quality of a PPS education is very important to respondents
  - Crowded classrooms and buildings, undersized facilities and older facilities are seen as threats to PPS's ability to deliver quality educational experiences
  - Uneven distribution of enrollment at elementary level threaten equitable access and experiences for students, teachers and staff
  - Maintaining the reputation of the school system supports residential tax base
- Community involvement in the planning process critical to its success
  - Transparent process
  - Rooted in information
- Diversity, equity and inclusion objectives need to be considered in developing plans for the future